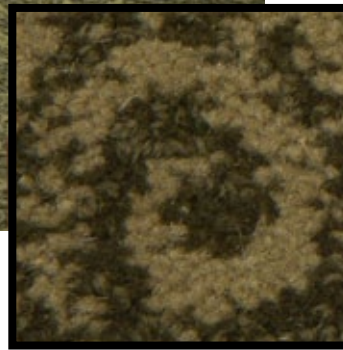


CRAFTSMAN COLLECTION

Flora - Studio Collection

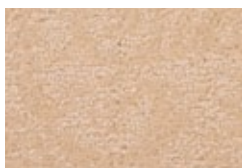


Delicate leaves cascade across your floor in this botanical pattern. The perfect scale to compliment any interior. Choose any solid or two tone combinations from any of the 30 fashion shades. Available as broadloom or combine with another pattern for area rugs.



actual size

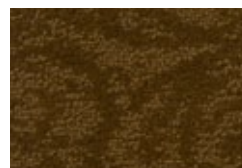
Fiber Content: 100% Wool
Width: 12 feet
Pattern Repeat: 12"x 16"



□7401 Eggshell



□7404 Golden Romance



□7407 Flagstone



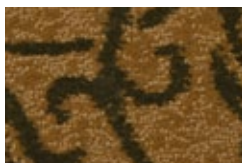
□7409 Cocoa Cream



□7406 Gold Mine



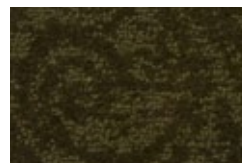
□7405 Blue Tradition



□7408 Rainforest



□7403 Landscape Green



□7410 Deep Olive

Available in Custom Area Rugs

